

Eastbourne Artists

# SUMMER

OPEN HOUSES and studios

MAY 25TH&26TH and JUNE 1ST&2ND 2024

Over 50 artists and makers showing their work around the town (and just outside) over two weekends.  
[www.eastbourneartists.com](http://www.eastbourneartists.com)



## Welcome to our 15<sup>th</sup> anniversary!

Established in 2008 to celebrate the opening of the new Towner gallery, the artists and makers of Eastbourne have opened their homes and studios twice a year since then.

For those new to the 'open house' concept, it allows the public to view and buy artworks, whether it be a painting, photograph, ceramic pot, piece of jewellery or indeed any other 'hand made' original that you won't find anywhere else. Use the grey numbered dots to locate the venues you'd like to visit and make sure you note opening times. Most are open both weekends but some are open just the first or second weekend. So plan your visit accordingly! Many artists now have credit card machines but Paypal or direct bank transfers are also useful if you find something you want to buy. The majority of artists are either in Old Town, Town Centre, Meads or Seaside but this year we have a few just out of town in Hampden Park and Willingdon (see map on inside back cover) So take in a trip to the beautiful Hampden Park and visit a few artists while you're there!

Whilst every effort is made to ensure that all information in this booklet is correct, responsibility cannot be taken for any errors or omissions. Individual artists and studios are responsible for all displays, sales etc at their own venues. The publishers of this publication have no responsibility in the artists' venues. All queries, please call 07768 387980  
Cover images . Large - Julian Sutherland-Beatson. Small, left to right: David Rice, Gio Martin, Adrian Chappell.

[www.eastbourneartists.com](http://www.eastbourneartists.com)

Copies of this brochure are available from the following locations:

**Waterstones**  
Terminus  
Precinct  
BN21 3AJ

**Towner**  
College Rd  
BN21 4JJ

**Welcome Centre**  
Devonshire  
Quarter  
BN21 4BP

**Lighthouse Gallery**  
Cornfield  
Terrace  
BN21 4NS

**Big Art**  
Lismore Rd  
BN21 3BA

**Planahead**  
Commercial  
Mews South  
BN21 3XF

**Enterprise Centre**  
Station Parade  
BN21 1BD

As well as with all participating artists and a number of venues such as cafes, pubs and shops around the town.



## David, Nina and Elise

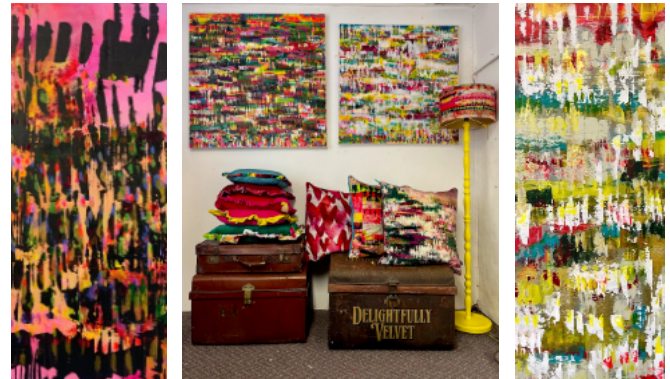
2

23 Parsonage Road, BN21 1JF

David has paintings and prints inspired by the South Downs & the coast. Nina has cards, prints, badges, tea towels & cushions of her illustrations. Elise has functional and beautiful stoneware ceramics.

Open both weekends 11am-4pm

[www.davidriceart.com](http://www.davidriceart.com)  
[www.ninamooncie.com](http://www.ninamooncie.com)  
[www.instagram.com/eliseceramics](http://www.instagram.com/eliseceramics)



## Vicki Disney & friends

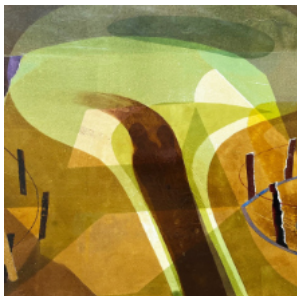
1 Chamberlain Road BN21 1RU

[www.vickidisney.art](http://www.vickidisney.art) 07752 010827

We welcome you to a studio filled with a huge array of colours in contemporary paintings, Delightfully Velvet cushions, cards and crystals & healing crystal bracelets. Pop in and say hello.

Open both weekends 11-4.30

3



## Emma Mason Gallery

1

### Forms of Land & Sea

An exhibition of original prints by Sussex artist, Rob Peel, inspired by our local landscape.

21 Lushington Lane, BN21 4LJ

T. 01323 727545

[www.emmamason.co.uk](http://www.emmamason.co.uk)

Open both Saturdays 25th May & 1st June (10am - 4pm)



## Anne Castano

32 Abbey Road, BN20 8TD  
[annecastanoceramics@gmail.com](mailto:annecastanoceramics@gmail.com)

07815 849716

6 Artists exhibiting painting, print, ceramics, textiles and cyanotype. Big pieces and smaller affordable gifts. New this year!

Open both weekends  
11am to 4pm

4



### Christine Munro, family and friends

38 Cobbold Avenue,  
Old Town, BN21 1UZ

5

Paintings in various styles, stained glass, greetings cards, and refreshments available. Looking forward to welcoming guests to our friendly house. Supporting the Retired Greyhound Trust.

Open both weekends 11am - 4pm



### Rachel Holmes

7 Peppercombe Road  
BN20 8JH 07817 193570

6

[www.southcoastcastaway.com](http://www.southcoastcastaway.com)

Nature inspired artist. Characterful animal portraits and sculptures. Original artwork and limited edition prints available.

**Also showing a selection of paintings from Lis Lawrence**

Open both weekends 11-4pm  
(But closed first Sunday)



49 Prideaux Road  
BN21 2NE

Facebook: The Big House

01323 731792

There is a warm welcome at the Big House displaying a fantastic variety of art and crafts including:

## THE BIG HOUSE

**Barbara Butterworth** - ceramics

**Mell Gill** - pebble pictures

**Lynda Lindfield** - jewellery

**Hilary Simpson** - textiles

**Helen Warren** - paintings & textiles

**John Warren** - ceramics

7

Open both weekends 11.00 - 5.00 each day



## Penny & Bernie

8

We are showing the processes of realising various textile designs, on different fabrics, for film, opera, ballet, musicals and theatre costume, from productions around the world.

A 15 minute talk at 12.00 & 3.00 on each day, will explain some of the dyeing, painting & printing techniques involved.

71, Willingdon Road, BN21 1TR. [pennyhad35@gmail.com](mailto:pennyhad35@gmail.com)

Open both weekends 11am - 5pm



### Samantha Tuffnell & Alice Hesketh

9

Top Flat, 6 Gore Park Road, BN21 1TQ

Sam paints local land & seascapes, while Alice is a figurative artist inspired by people, fashion & nature. Come along & see their original paintings, prints & cards.

Open both weekends 11am-4pm

Instagram: [samanthattuffnellartist](https://www.instagram.com/samanthattuffnellartist)  
Instagram: [aliceheskethart](https://www.instagram.com/aliceheskethart)



### Ceramics at No. 4

10

4 Ashburnham Gardens BN21 2NA  
07786 037978

Welcome to our second open house with six artists showcasing beautiful modern ceramics, jewellery and crafts.

Pop along for tableware, decorative pieces and keepsakes by Sussex and international artists.

Open first weekend only. 11 to 4.00



### Ede-Smith & Friends

11

48 Mill Road BN21 2PG  
openhouse.ede-smith.art

07879 468345

Join William and Emma for a coffee and two rooms of paintings, sculpture, pottery/ceramics, prints and textile art.

Open both weekends 10:30am to 4:30pm. Refreshments available.

### Elda Abramson

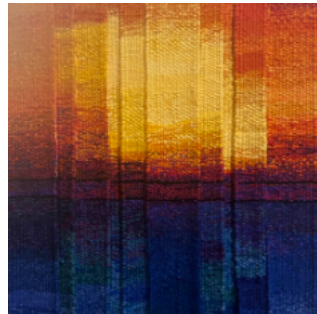
12

Elda invites you to a new Open House venue, Sicilia Qui, a coffee lounge in the Enterprise Centre by the station. (BN21 1BD)

Weavings and paintings as well as greeting cards will be for sale.

10:30 - 4 Saturday & Sunday both weekends. 07968 944668

elda.abramson@btinternet.com



### Lynn Hanford-Day

13

Room 1 Trinity Trees,  
BN21 3LA 07734 695147

www.sacredintuitiveart.com

Artist specialising in the traditional sacred arts: Celtic, Islamic, Hindu working with watercolour and gold leaf.

Open both weekends 11am to 4pm



SAT 1ST JUNE 2024  
10AM - 5PM

/SussexCraftandDesignFair



**SPINNERS  
WEAVERS  
DYERS  
FELTERS  
TEXTILE ARTISTS  
KNITTERS**

**SUPPLIERS, MAKERS,  
DEMOS & WORKSHOPS**



## ENTERPRISE

INDEPENDENT SHOPPING

Enterprise Shopping Centre, Station Parade,  
Eastbourne, BN21 1BD

[www.enterprise-centre.org](http://www.enterprise-centre.org)

Fibre Fest takes place upstairs at the Enterprise and access is currently via stairs only

12

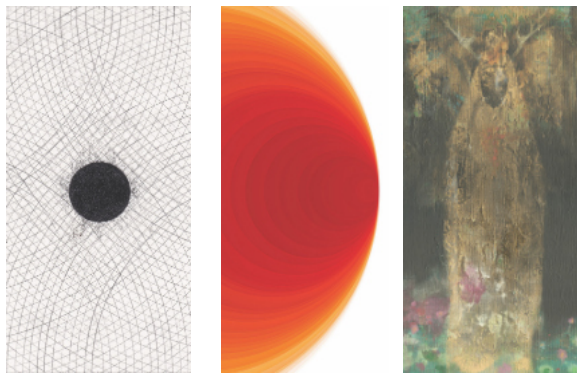
# SALON 2024

15

A curated show by BCJ Communications highlighting current concerns and approaches of a selection of invited contemporary practitioners.

**6 Commercial Road, Eastbourne BN21 3XE**

25 – 26 May & 1 – 2 June – 10.00 – 16.00



## JULIAN SUTHERLAND-BEATSON

Showing new paintings alongside landscapes, cityscapes and graphic arrangements from the past few years. 4 times RA Summer Show exhibitor. 2 paintings in the House of Lords permanent Collection.

**The Studio, 3 Dittons Road, BN21 1DN**

Open both weekends 11-4  
(but closed first Sat 25<sup>th</sup> May)

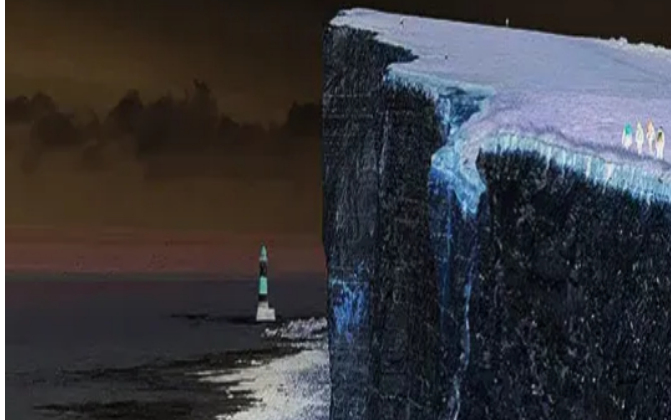
[www.sutherlandbeatson.com](http://www.sutherlandbeatson.com) 07768 387980

16



16 MAY – 2 JUNE

## Sussex by the Sea



*Gallery@42*

Open Thursdays 12-8

Friday-Sunday 12-6

*Gallery@42*

42 South St

Eastbourne

BN21 4XB

[www.galleryat42.co.uk](http://www.galleryat42.co.uk)

07703 452554

Part of  
Eastbourne  
Summer Open  
Houses

Showing work by:

**Paul Dix**

**Jane Hicks**

**Jackie Hulford**

**Paul Jordan**

**Colin Knapp**

**Maxine Morgan**

**Val Racher**

**Christine Racher**

**Firouzeh Rashzadeh**

**Pennie Cunliffe - Lister**

*Gallery*  
@  
42

17

# The Lighthouse Gallery

18

19 Cornfield Terrace BN21 4NS. Open Tuesday - Saturday 10-4pm

Bursting with fabulous work by 25 local artists and makers, make sure to put a visit to The Lighthouse Gallery on Cornfield Terrace on your list. Unique paintings, prints, glass, ceramics, woodwork, silver jewellery, textiles and much more to discover, all at affordable prices. Browsers and well behaved dogs welcome!

We serve homemade cakes, light lunches and a great cup of coffee. Gift vouchers available.



17

## Pennie's Pet Portraits

If you are thinking about commissioning a pet portrait for yourself or a loved one and have any questions please feel free to contact Pennie or call into the gallery.

Gallery@42 open Thursdays 12-8 Friday-Sunday 12-6

penniespetportraits@gmail.com

Mobile: +44 7703 452 554 Landline: +44 1323 724229

Pennies Pet Portraits Studio and Gallery  
Gallery@42, 42 South St, Eastbourne BN21 4XB

10% discount on commissions made showing this brochure



## Gio Martin

Gio will be exhibiting her colourful abstract figurative paintings, as well as quirky figurative ceramics, cards and lino prints.

She will exhibit in The Garage Gallery on Manifold Road.

Instagram: @giomartinartist  
Facebook: @giomartinartist

Open both weekends 11 till 4

19



## Heidi Westgate & Friends

36 Manifold Road BN22 8EH

heidewestgate504@gmail.com

Explorations in paint, mixed media and fabric from Joanna Kinchin, Jacqueline Isabeau Doo and Heidi Westgate.

Spoken word and live music on Saturday afternoon.

Open second weekend  
1&2 June only. 10.30 - 5.00

20



## Cosy Cottage

1 Church Cottage, Warrior Square, BN22 7DD

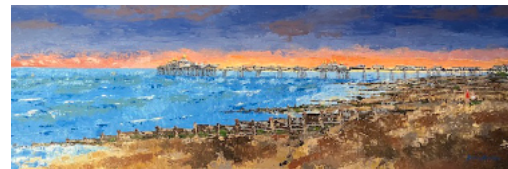
Angela Elliott: Milliner  
@elliottsmillinery  
www.elliottsmillinery.co.uk

Amanda Cardoso: Printmaker  
@amanda\_cardoso\_printmaker  
www.amandacardosoprintmaker.com

Hats, prints and jukebox jive

Open first weekend only, 11-4

21



## Andrew Murdoch

55 Royal Parade, BN22 7AQ

07801260129

andrew.james.murdoch@gmail.com murdochmentos.co.uk

Andrew has exhibited at the Curwen Gallery in London's West End. He paints commissions of clients' significant buildings or places.

Open both weekends 12 noon - 6 pm

22



**Adrian Chappell**

23

Flat 1, 28 Silverdale Road,  
BN20 7EY 07905 008902

[www.curiouscurators.org.uk](http://www.curiouscurators.org.uk)

**Postcards & Postscripts:** a work-in-progress collection of paintings, postcards and texts inspired by memories from the 1950s and 60s.

Open Saturday 1st and Sunday  
2nd June only (11am - 5.00pm)



**Motley**

25

70 Eastbourne Road,  
Willingdon BN20 9NS  
07914 879055

A house full of happy colourful  
paintings & crafts from Ruth & Ady  
Backshall and guests.

Tea & cake in the garden!

Open 11 - 5 FIRST WEEKEND ONLY



**Sussex Pottery &  
Mark Austin, Artist**

24

5 Holywell Close, Meads. BN20 7RX

Instagram [susanramsaysmith](https://www.instagram.com/susanramsaysmith)

Susie, Sussex Pottery; wild clay  
vessels with coloured slip scenes &  
sculptures.

Mark Austin, Artist; wood sculptures  
& charcoal landscapes

Open 25 & 26 May & 2 June

10.30-4.30



**Roger and Tim Gorringe**

26

15 Tas Combe Way,  
Willingdon Village BN20 9JA  
07977 410260

[www.starlingforge.uk](http://www.starlingforge.uk)

Roger's detailed watercolour and  
Acrylic paintings, of a variety of  
subjects + cards alongside  
Tim's wrought iron creations.

Open both weekends.  
10am to 4pm

**EASTBOURNE CHRISTMAS OPEN HOUSES & STUDIOS**  
16/17 & 23/24 NOVEMBER

Dates for your diary! Contact us if you are  
interested in participating. Registration opens mid  
September.

[www.eastbourneartists.com](http://www.eastbourneartists.com) 07768 387980

NOTES

\_\_\_\_\_

\_\_\_\_\_

\_\_\_\_\_

\_\_\_\_\_

\_\_\_\_\_

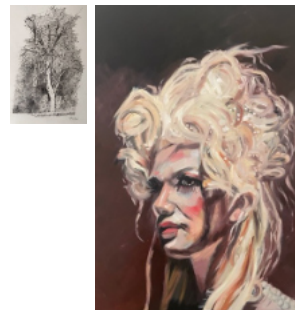
\_\_\_\_\_

\_\_\_\_\_

\_\_\_\_\_

\_\_\_\_\_

\_\_\_\_\_



**Helena Birch**

27

11 Rosebery Avenue  
Hampden Park BN22 9Q  
[helenabirch@hotmail.com](mailto:helenabirch@hotmail.com)

Portraits, figures and natural forms  
from Helena Birch. Also  
architectural drawings and trees  
from Derek Irving.

Refreshments for anyone prepared to  
trek out here!

Open both weekends. 11am - 4pm



**Sharon Randall**

28

65 Brassey Avenue  
Hampden Park BN22 9QH

I will be showing mixed media  
botanical and still life artwork,  
along with monotype prints and  
cards.

Refreshments and a warm  
welcome.

Open both weekends.  
10.30am to 4pm



## David Nokku

29

### NOKKUART

109 Long Beach View,  
BN23 5NB

07968 445096

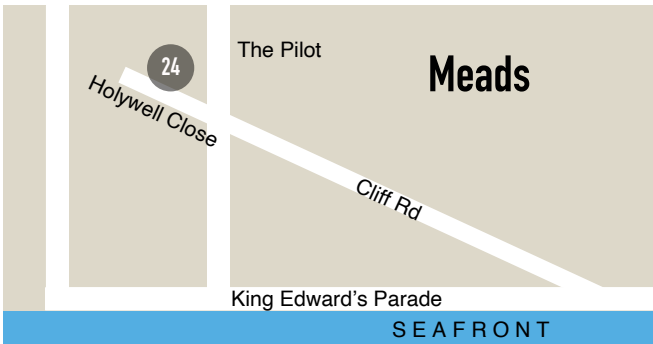
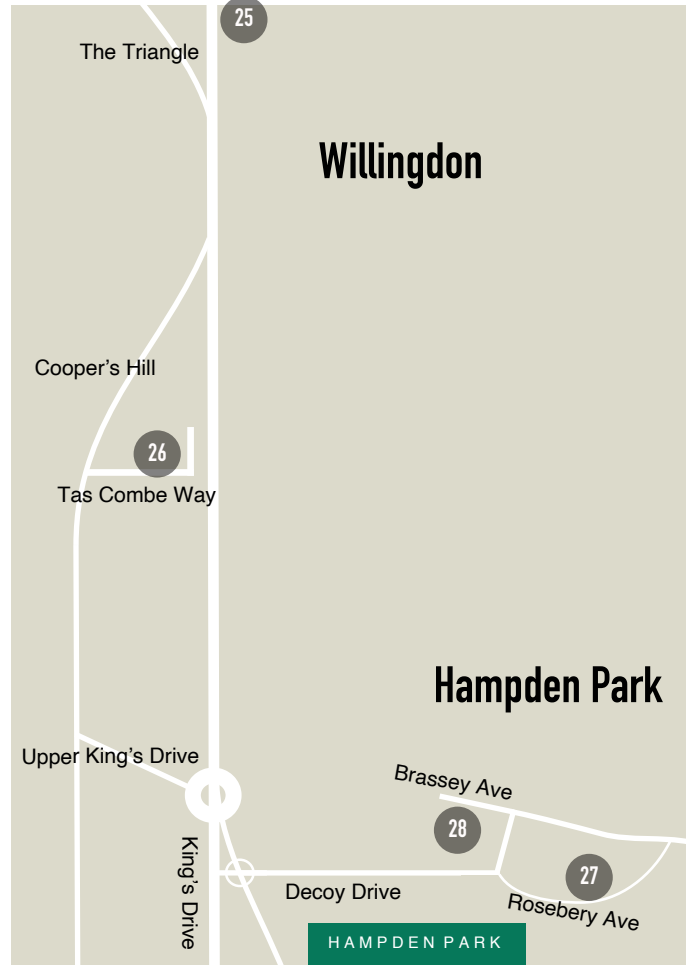
A warm welcome awaits you at the Harbour. New artist Dave Nokku showcasing digital art in storybook and digital graffiti.

Dave relocated to Eastbourne after leaving the world of design. His practice in digital art reveals intricate stories to include life, environment and community.

www.nokkuart.com  
Instagram: nokkuart  
TikTok: nokkuart

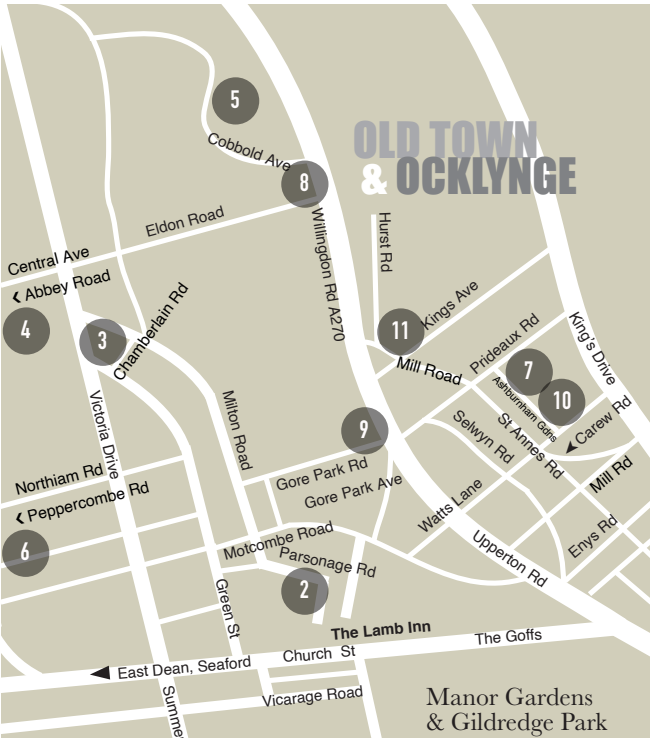
Refreshments served

Open both weekends  
11am - 4pm





# OLD TOWN & OCKLYNGE



Manor Gardens & Gildredge Park

# TOWN CENTRE

Please note, maps are not to scale and seek to show general location within the town.

